

LUCEPLAN WORLDWIDE

LUCE  
PLAN

SKIRA



Cover  
Tama Art University Library  
(Hachioji Campus)  
Toyo Ito & Associates Architects  
photo Ishiguro Photographic Institute

Project Coordination  
Rosi Guadagno and Patrizia Vioenzi

Graphic  
R.A.D.L. &

Photo  
© Hedrich Blessing / OWPR, pp. 113, 114  
Peter Berson, pp. 8, 50, 52  
Federico Brunetti, p. 49  
Mario Carriè, pp. 98, 222  
Alberto Cocchi, p. 252  
Peter Forgenasen, p. 154  
Jens Hauspurg, p. 232  
Saverio Lombardi Vallauri, pp. 131, 132  
Jan Maří, pp. 64, 66  
André Morin, p. 238  
Mikkel Mortensen, pp. 23, 24  
Andrés Otero, p. 124  
Antonio Pedrosa, pp. 99, 100, 109, 110  
Laura Rizzi, pp. 166, 168  
Ivan Santani, pp. 103, 104, 106, 141, 142,  
144, 146, 149, 150, 200, 202, 204, 225,  
226, 228, 230, 259, 260, 262, 264, 266  
Filip Štupal, pp. 79, 80, 82  
Luca Tamburini, pp. 300, 302  
John Van Groenendaal, pp. 291, 292, 295,  
296, 298  
Peter Wumli, p. 34  
Ishiguro Photographic Institute, pp. 15, 16

Special Thanks  
Minako Morita  
Nihan Smrek  
Peter Smrek  
Smussen.com  
Unifor  
Well-adv

First published in Italy in 2008 by  
Skira Editore S.p.A.  
Palazzo Casati Stampa  
via Torino 61  
20123 Milano  
Italy  
www.skira.net

© 2008 by Luceplan spa, Milano  
© 2008 Design.doc for the texts  
© 2008 Skira editore  
All rights reserved

All rights reserved under international  
copyright conventions.  
No part of this book may be reproduced  
or utilized in any form or by any means,  
electronic or mechanical, including  
photocopying, recording, or any  
information storage and retrieval system,  
without permission in writing from  
the publisher.

Printed and bound in Italy. First edition

Distributed in North America by Rizzoli  
International Publications, Inc.,  
300 Park Avenue South, New York,  
NY 10010, USA.  
Distributed elsewhere in the world  
by Thames and Hudson Ltd.,  
181A High Holborn, London WC1V 7DX,  
United Kingdom.



LUCEPLAN WORLDWIDE

SKIRA

<b>NAUTICA</b> SHIPS	<b>ALLESTIMENTI TEMPORANEI</b> TEMPORARY EXHIBITIONS	<b>SPAZI COMMERCIALI</b> COMMERCIAL SPACES	<b>UFFICI</b> OFFICES	<b>HOTEL E RISTORANTI</b> HOTELS AND RESTAURANTS	<b>SPAZI PUBBLICI</b> PUBLIC SPACES
166 Ferretti Altura 690	182 Design on Board 2008	236 Audi Porsche Showroom	32 Amagerbanken	60 Artic Palacio de Hielo	42 Allianz Teatro
168 Ferretti 510	186 Giellesse, Salone 2008	290 Biermans Interieur	26 Carris Public Transportation	64 Blue Orange	270 Anne Frank Museum
144 MSC Orchestra	124 Green Energy Design 2008	54 Bon Marché Department Store	156 Discovery 5 TV Network	126 Brasserie de l'Ouest	232 Bauhaus Universität
194 Princess Cruises	268 Salone dell'Automobile 2007	184 Democratic Department Shop	138 DR Byen	116 Café Dagnis	148 Biblioteca Auris
252 Riva 68' Ego Super	72 Samsung, Fuori Salone 2008	286 Fleiner Möbel	18 Ekol Logistik	212 Café Zezé	84 Circolo Filologico Milanese
	216 Valcucine, Fuori Salone 2008	90 Land Rover Showroom	234 Eclëtis Headquarters	154 Copenhagen Island	188 CISA Andrea Palladio
		282 Marex spa	34 Google	98 FC Porto Dragon House	118 Fondation Carier
		280 Peugeot Showroom	206 I Guess PCM	130 Fiera Milano	68 Gorton Monastery
		254 Shopping Centre	170 Mediapason TV Network	152 Gastehaus im Apfelgarten	160 Hallenbad Zvetli fitness centre
		200 Showroom Basketball Champion	258 NNE Pharmaplan	196 Griffins Cafe	246 Health City fitness centre
		278 Zucchi	22 Norden Shipping	134 KØY Royal Danish Yacht Club	242 Helene Elsass Center
			88 Novartis Pharma	276 My Sushi	136 Istituto Clinico Humanitas
			50 NYT Building	62 Tom Tom Suites	240 Kinderdagverblijf
			48 Riccardo Beyerle		238 Médiathèque
			190 Samas		102 Musée d'Orsay
			112 Toshiba		220 Musée du Quai Branly
			36 Wall AG		300 Nuova Accademia Belle Arti
			224 Wonsild & Søn		108 Place Health Club
					30 St. Simon's Church
					14 Tama University
					94 Teatro Strehler
					92 University of Amsterdam
					76 University of Dundee
					78 University Campus



<b>AUSTRIA</b>		<b>GERMANY</b>		<b>SCOTLAND</b>	
160	Hallenbad Zwettl fitness centre	102	Musée d'Orsay	300	Nuova Accademia Belle Arti
<b>CZECH REPUBLIC</b>		220	Musée du Quai Branly	194	Princess Cruises
64	Blue Orange	144	MSC Orchestra	48	Riccardo Beyerle
78	University Campus	<b>GERMANY</b>		252	Riva 68° Ego Super
<b>DENMARK</b>		232	Bauhaus Universität	72	Samsung, Fuori Salone 2008
32	Amagerbanken	286	Fleiner Möbel	254	Shopping Centre
212	Café Zezé	152	Gästehaus im Apfelgarten	200	Showroom Basketball Champion
154	Copenhagen Island	36	Wall AG	94	Teatro Strehler
138	DR Byen	<b>ITALY</b>		216	Valcucine, Fuori Salone 2008
242	Helene Elsass Center	42	Allianz Teatro	278	Zucchi
134	KDY Royal Danish Yacht Club	148	Biblioteca Auris	<b>JAPAN</b>	
258	NNE Pharmaplan	84	Circolo Filologico Milanese	14	Tama University
22	Norden Shipping	188	CISA Andrea Palladio	<b>NETHERLANDS</b>	
224	Wonsild & Søn	184	Democratic Department Shop	270	Anne Frank Museum
<b>ENGLAND</b>		162	Design on Board 2008	290	Biermans Interieur
68	Gorton Monastery	234	Ecllettis Headquarters	246	Health City fitness centre
196	Griffins Cafe	166	Ferretti Altura 690	206	I Guess PCM
<b>FRANCE</b>		168	Ferretti 510	240	Kinderdagverblijf
126	Brasserie de l'Ouest	130	Fiera Milano	190	Samas
54	Bon Marché Department Store	186	Giellesse, Salone 2008	92	University of Amsterdam
156	Discovery 5 TV Network	124	Green Energy Design 2008	<b>PORTUGAL</b>	
118	Fondation Cartier	136	Istituto Clinico Humanitas	26	Carris Public Transportation
238	Médiathèque	90	Land Rover Showroom	98	FC Porto Dragon House
		282	Marex spa	108	Place Health Club
		170	Mediapason TV Network		
		276	My Sushi		
				<b>SPAIN</b>	
				60	Artic Palacio de Hielo
				236	Audi Porsche Showroom
				280	Peugeot Showroom
				<b>SWEDEN</b>	
				116	Café Dagnis
				<b>SWITZERLAND</b>	
				34	Google
				88	Novartis Pharma
				268	Salone dell'Automobile 2007
				<b>TURKEY</b>	
				18	Ekol Lojistik
				62	Tom Tom Suites
				<b>USA</b>	
				50	NYT Building
				112	Toshiba





🇮🇹 Dal 1978 un percorso di creatività industriale che vanta svariati premi e importanti riconoscimenti, ma soprattutto la presenza con i propri prodotti in decine di realizzazioni, importante prova della validità dei risultati. Luoghi di lavoro, di studio, di incontro, più generalmente di vita quotidiana, in cui le utilities di Luceplan e di Elementi di Luceplan – sistemi di illuminazione per l'architettura dedicati al mondo del progetto e del contract – svolgono i servizi per i quali sono stati ideati, dando nel contempo carattere allo spazio.

Un paesaggio eterogeneo di opere di architettura italiane e straniere, di ampia e di ridotta estensione, firmate da progettisti affermati e da giovani promesse, in cui la cultura tecnica e umanistica dell'azienda, con la "classicità contemporanea e innovativa" dei suoi prodotti, diventa protagonista, componente che segna la qualità di ogni realizzazione. Punti focali di tutte le fotografie raccolte in questo volume – nel loro insieme interpretabili anche come abaco di possibilità, di potenzialità –, le collezioni Luceplan e Elementi di Luceplan si raccontano da sole, mostrando scenari estetici e di luce che non hanno bisogno di parole.

Un racconto quindi solo per immagini. Non mero catalogo né vero e proprio libro, forse più una sorta di "album di luoghi e di flussi luminosi": tante istantanee da tutto il mondo per catturare quello che solitamente non si conosce, ovvero la vita reale delle collezioni Luceplan dopo la ricerca, la produzione, la vendita, nel mondo globale.



✿ Since 1978, a shining example of industrial creativity that has received a series of awards and other important marks of recognition, but above all seen its products included in dozens of interior designs, in an important demonstration of the validity of its results. Places of work, study, meeting and, more in general, daily life, in which the “utilities” of Luceplan and Elementi di Luceplan – lighting systems for architecture dedicated to the world of design and contract supply – perform the functions for which they have been conceived, while giving character to the space.

A varied panorama of Italian and foreign works of architecture, on a large and small scale, created by established designers and promising youngsters, in which the company’s technical and artistic culture, with the “contemporary and innovative classicism” of its products, play a leading role, as components that set the seal of quality on every project. Focal points of all the photographs in this volume – which taken as a whole can also be seen as a gamut of possibilities, of potentialities – the Luceplan and Elementi di Luceplan collections speak for themselves, showing us settings in which the aesthetic quality of the lighting has no need of words.

So it is a story told exclusively in pictures. Neither just a catalogue nor a book in the proper sense, it can perhaps best be described as a sort of “album of locations and streams of light”: so many snapshots from all over the world capturing something to which we are not usually exposed, the real life of the Luceplan collections after research, production and sale, as they can be found the world over.

🇩🇪 Seit 1978 sind wir auf der Suche nach industrieller Kreativität, die mit zahlreichen Preisen und bedeutenden Anerkennungen ausgezeichnet wurde. Jedoch vor allem die Präsenz unserer Produkte in unzähligen Realisierungen ist ein sichtbarer Beweis für die Hochwertigkeit der erzielten Ergebnisse. Räume, die zum Arbeiten, Lernen oder zur Begegnung dienen, also einfach Orte des täglichen Lebens, in denen die utilities von Luceplan und Elementi di Luceplan – Beleuchtungssysteme für die Architektur der Projekt- und Contract-Bereiche – die ihnen zugedachten Funktionen erfüllen und gleichzeitig zur Charakterisierung des Raumes dienen.

Eine heterogene Landschaft von italienischen und ausländischen Werken großer und kleinerer Ausmaße, konzipiert von bekannten Designern mit großen Namen oder unbekanntem aber vielversprechenden jungen Talenten, bei denen die technische und humanistische Kultur unseres Unternehmens in den Mittelpunkt gerückt und die „zeitgenössische und innovative Klassik“ unserer Produkte als Ausdruck der Qualität in allen Realisierungen deutlich werden. Alle in diesem Band gesammelten Fotografien, in deren Brennpunkt die Kollektionen Luceplan und Elementi di Luceplan stehen und die in ihrer Gesamtheit auch als Werkzeug zur Darstellung der Möglichkeiten und Potentialitäten betrachtet werden können, sind selbstredend. Sie zeigen ästhetische und lichtgestalterische Szenarien, die keiner Worte bedürfen.

Eine Erzählung also, die nur aus Bildern besteht. Mehr als ein Katalog, ist dieses fast schon „Buch“ eine Art „Album der Örtlichkeiten und Lichtströme“: viele Schnappschüsse aus allen Teilen der Welt, um festzuhalten und zu zeigen was man normalerweise nicht kennt. Das wirkliche Leben der Luceplan-Kollektionen nach der Planung, der Produktion und dem Verkauf in der globalisierten Welt.

🇫🇷 Un parcours de création industrielle qui, depuis 1978, peut se targuer de nombreux prix et d'importantes récompenses, mais surtout de l'utilisation de ses produits dans de nombreuses réalisations, ce qui constitue la preuve irréfutable de la validité des résultats obtenus. Des espaces de travail, d'études, de rencontres, plus génériquement des lieux de vie quotidienne, où les productions Luceplan et Elementi di Luceplan – systèmes d'éclairage pour l'architecture destinés au monde des concepteurs et des entreprises spécialisées – rendent pleinement les services pour lesquels elles ont été pensées, tout en conférant du caractère à l'espace.

Un paysage hétérogène de créations architecturales, italiennes et étrangères, de dimensions contenues ou imposantes, portant la signature de concepteurs affirmés et de jeunes promesses, où la culture technique et humaniste de l'entreprise, associée au "classique tout contemporain et innovateur" de ses produits, devient protagoniste et dont les éléments caractérisent la qualité de chaque réalisation. Au centre de toutes les photographies rassemblées dans ce volume – globalement interprétables également comme une multitude de possibilités, de potentialités –, les collections Luceplan et Elementi di Luceplan parlent d'elles-mêmes et proposent des scénarios esthétiques et lumineux qui n'ont pas besoin d'être commentés.

Un récit, donc, composé uniquement d'images. Pas un simple catalogue, ni même un livre à proprement parler : peut-être plutôt une sorte "d'album de lieux et de flux lumineux", une kyrielle d'instantanés du monde entier pour capturer ce que, habituellement, l'on ne connaît pas, c'est-à-dire la vie réelle des collections Luceplan après les phases de recherche, de production, de commercialisation, dans le monde global.

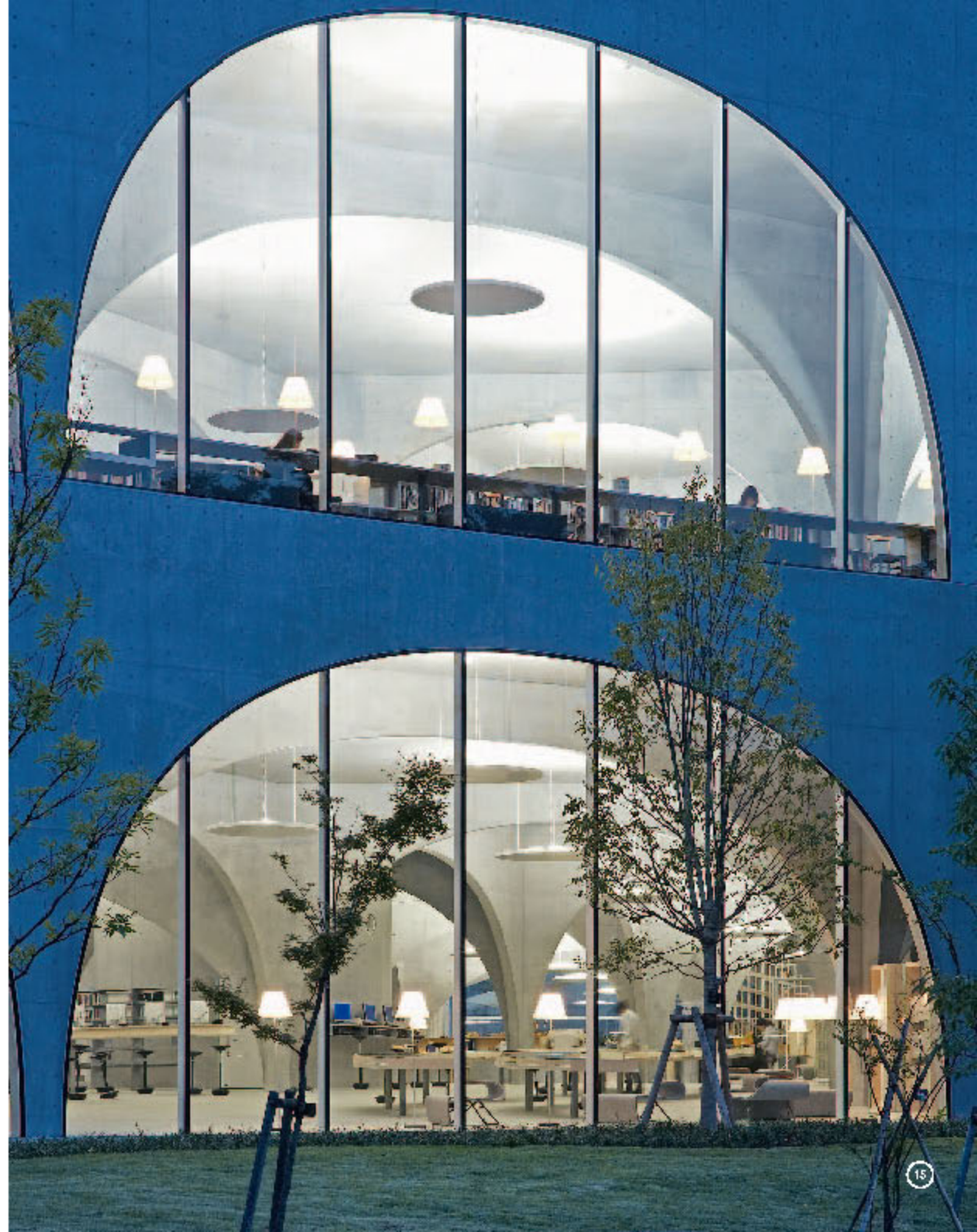
🇪🇸 Un itinéraire de créativité industrielle galardonado, desde el año 1978, con diversos premios e importantes reconocimientos y, sobre todo, con la presencia de sus propios productos en decenas de realizaciones: una prueba importante de la validez de los éxitos conseguidos. Lugares de trabajo, de estudio, de encuentro, en general de vida diaria, donde las utilities de Luceplan y Elementos de Luceplan – sistemas de iluminación para la arquitectura dedicados al mundo del proyecto y del contract – ofrecen los servicios que han inspirado su creación, proporcionando al mismo tiempo carácter al espacio.

Un paisaje heterogéneo de obras de arquitectura italianas y extranjeras, de amplia y de reducida extensión, firmadas por proyectistas famosos y por jóvenes promesas, donde la cultura técnica y humanística de la empresa, junto con "el mundo clásico contemporáneo e innovador" de sus productos, se convierten en protagonistas, en componentes que marcan la calidad de cada realización. Las colecciones Luceplan y Elementos de Luceplan, puntos focales de todas las fotografías reunidas en este volumen (interpretables conjuntamente también como ábaco de posibilidades y capacidades), se explican solas, mostrando escenarios estéticos y de luz que no necesitan comentarios.

Así pues, un relato que utiliza sólo las imágenes. No un simple catálogo ni propiamente un libro, quizá más una especie de "álbum de lugares y de flujos luminosos": muchas fotografías instantáneas de todo el mundo para capturar lo que normalmente no se conoce, es decir, la vida real de las colecciones Luceplan después de la búsqueda, la producción y la venta en el mundo global.



Tama University, Tokyo  
Toyo Ito & Associates  
Costanza







Tama University, Tokyo  
Toyo Ito & Associates  
Costanza





Ekol Lojistik, İstanbul  
Tribun'nun Architectural  
Aircon



Elo Lojistik, İstanbul  
Tribunn Architectural  
Bsp









Norden Shipping, Copenhagen  
Dissing+Weitling  
Berenice





Carris Public Transportation, Lisbon  
Paula Moura, Miguel Arruda  
Blow





Carris Public Transportation, Lisbon  
Paula Moura, Miguel Arruda  
Blow





St. Simon's Church, Glasgow  
Foto-ma lighting architects and designers  
e04 suspension Elementi di Luceplan



Amagerbanken, Hellerup  
Christian Lund  
Trama







Google EM EA Engineering Hub, Zürich  
Camenzind Evolution  
*Titanio*



WallAG, *Duiven*  
ION Berlin - Carlo Ferrante  
*Orchestra*







WallAG, Duiven  
ION Berlin - Carlo Ferrante  
*Orchestra*





Wall.IG, Duiven  
ION Berlin - Carlo Ferrante  
Orchestra



Allianz Teatro, Assago  
A.G. Cavalchini, F. Librizzi  
Costanza, Mix





Allianz Teatro, Assago  
A.G. Cavalchini, F. Librizzi  
Costanza, Mlx

ESUBITO

La signora del teatro apre  
il suo studio dell'ora  
dei spettacoli.  
All'ora di lavoro è  
piena di macchine fotografiche  
perché la signora ha  
il proprio studio del  
TEATRO.

Allianz Teatro, Assago  
A.G. Cavalchini, F. Librizzi  
Costanza, Mix



Ricardo Beyerle, Milano  
Urb. A. M.  
Strip





# The New York Times



The New York Times, New York  
Renzo Piano Building Workshop





The New York Times, New York  
Reno Piano Building Workshop  
Berenice LED



Bon Marché Department Store, Paris  
Technical Department of Bon Marché  
Costanzo







Bon Marché Department Store, Paris  
Technical Department of Bon Marché  
*Glassglass*





Saint  
Valentin

Saint  
Valentin

Saint  
Valentin

Saint  
Valentin

Saint  
Valentin

Saint  
Valentin

Bon Marché Department Store, Paris  
Technical Department of Bon Marché  
Costan 20



Artic: Palacio de Hielo, Pamplona  
Pagola Iluminación  
Queen Titania







Tom Tom Suites, Istanbul  
Pamir Architectural  
Mirandolina





Blue Orange, Praha  
Plan Architects, s.r.o.  
Costanzo





Blue Orange, Praha  
Plan Architects, s.r.o.  
Cotanza



Gorton Monastery, Manchester  
Austin Smith Lord  
Consultant Engineers - RW Gregory  
Glassglass







Gorton Monastery, Manchester  
Austin Smith Lord  
Consultant Engineers - RW Gregory  
Glasglass





Samsung, Fuori Salone 2008, Milano  
Isacco Briacchi  
Mirandolina, Costanza





uscita di sicurezza  
divieto di sosta



Samsung, Fuori Salone 2008, Milano  
Isacco Bricchi  
Pod Lens



University of Dundee, Dundee  
James F. Stephen Architects  
*Happy Happy*





University Campus, Brno  
A Plus Brno, a.s.  
Fortebraccio







University Campus, Bmo  
& Plus Bmo, a.s.  
*Zeno Elementi di Luceplan*





University Campus, Bmo  
& Plus Bmo, a.s.  
*Zeno Elementi di Luceplan*





Circolo Filologico Milanese, Milano  
Sergio Stocco  
Costanza, Grande Costanza





Circolo Filologico Milanese, Milano  
Sergio Stocco  
Costanza, Grande Costanza





Novartis Pharma, Basel  
Hannes Wettstein  
Fortebraudio



Land Rover Showroom, Ragusa  
Vittorio Battaglia, Home Line  
Zero Elementi di Luceplan







University of Amsterdam, Amsterdam

Blow



Teatro Strehler, Milano  
Marco Zanuso  
*Piccolo Teatro (custom-made)*







Teatro Strehler, Milano  
Marco Zanuso  
*Piccolo Teatro (custom-made)*



FC Porto Dragon House, Porto  
Mario Azevedo - INAIN  
*Happy Happy*







FC Porto Dragon House, Porto  
Mario Azevedo - INAIN  
Fortebraudio



Musée d'Orsay, Paris  
Gae Aulenti  
Glass/glass







La Société des Amis  
du Musée d'Orsay

information  
information informazioni

Musée d'Orsay, Paris  
Gae Aulenti  
Costanza

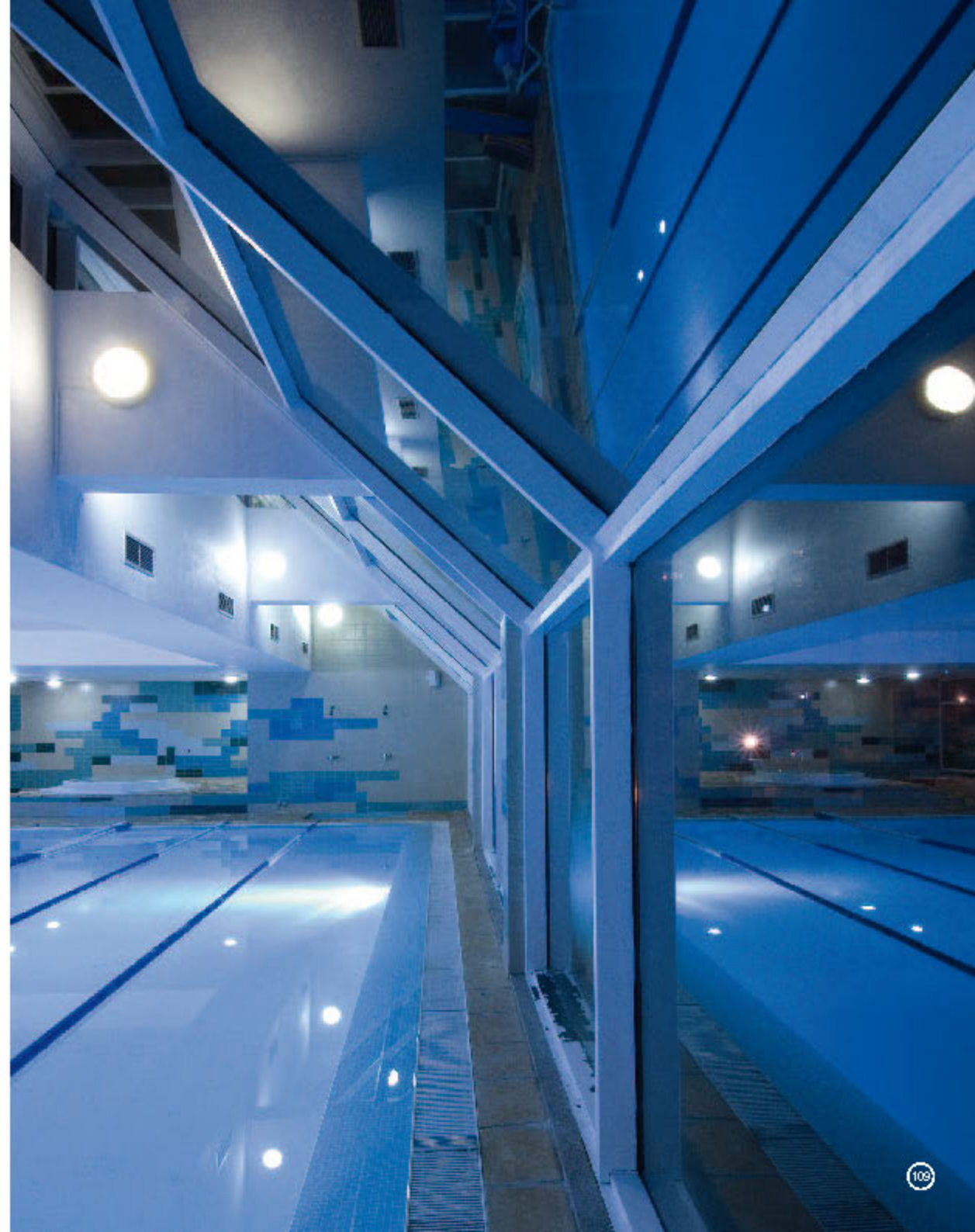




Musée d'Orsay, Paris  
Gae Aulenti  
Costanza



Place Health Club, Porto  
Mario Azevedo - INAIN  
Metropoli







Place Health Club, Porto  
Mario Azevedo - INAIN  
Blow



Toshiba, Chicago  
OWPYP  
Pod lens







Toshiba, Chicago  
OWBYP  
Pod lens





Café Dagnis, Malmö  
White Arch.  
Grande Costanzo



# Cartier



Fondation Cartier, Paris  
Jean Nouvel  
Costanzo





Fondation Cartier, Paris  
Jean Nouvel  
Costanza





Fondation Cartier, Paris  
Jean Nouvel  
Costanza





Green Energy Design 2008, Milano  
Matteo Vercelloni  
Sky



Brasserie de l'Ouest, Lyon  
Boucharlat  
Titania







Brasserie de l'Ouest, Lyon  
Bouscharlat  
Pod Lens



Fiera Milano, Rho-Pero  
Massimiliano Fuksas  
Zeno Elementi di Luceplan







Fiera Milano, Rho-Però  
Massimiliano Fuksas  
*Queen Titania*



KDY Royal Danish Yacht Club, Hellerup  
Vilhelm Lauritzen  
Costanza







Istituto Clinico Humanitas, Rozzano  
Italia dell'Acqua - Franco Raggi  
*Lightdisc*





DR Byen, Copenhagen  
PLH Architects  
Fortebraccio



DR Byen, Copenhagen  
PLH Architects  
*Fortebraccio*







DR Byen, Copenhagen  
PLH Architects  
Grande Costan 22





MSC Orchestra  
De Jorio International Design

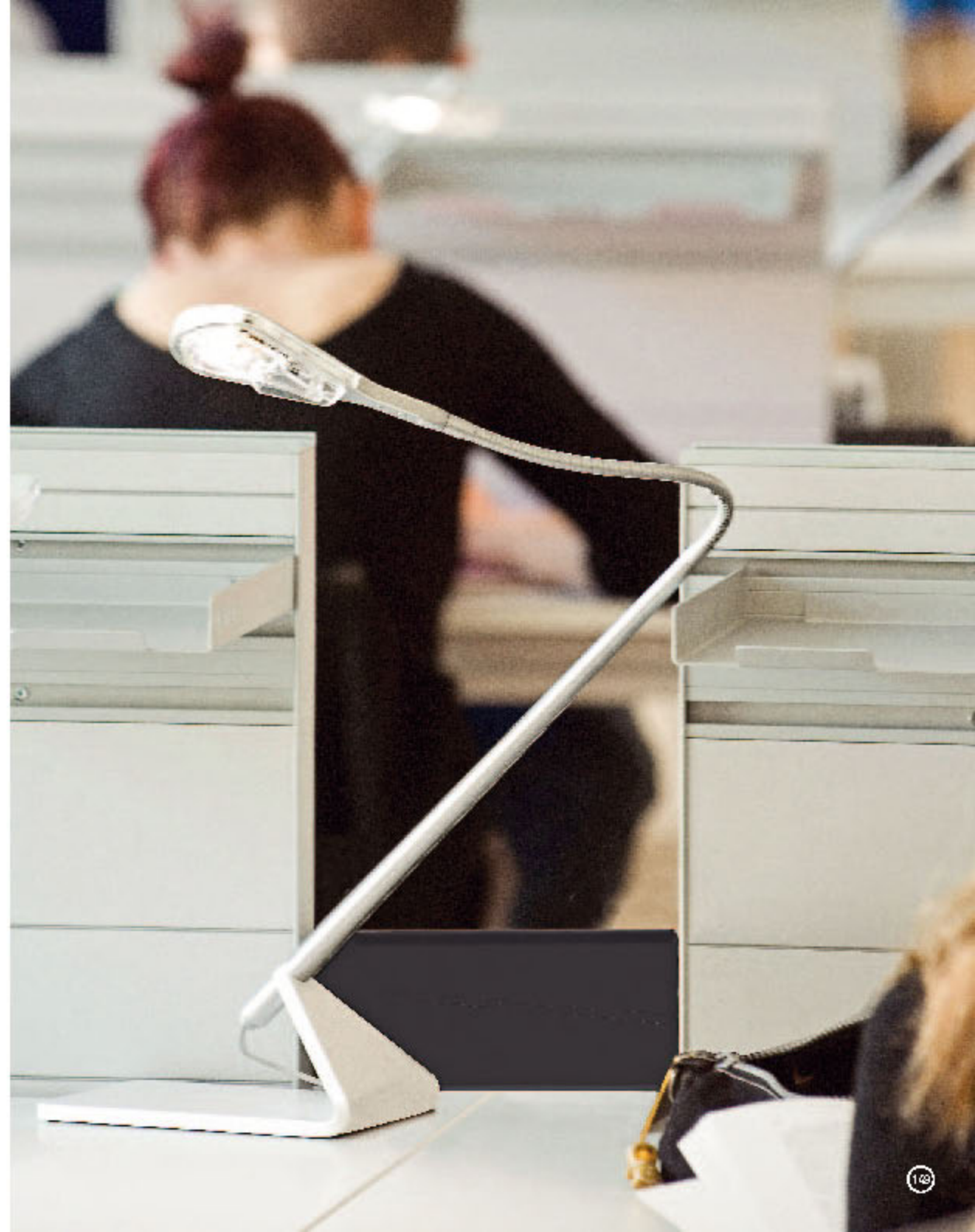




MSC Orchestra  
De Jorio International Design  
*(custom-made)*



Biblioteca Auris, Vignola  
Paola Vidulli - Space Planning  
*Mix*







Biblioteca Auris, Vignola  
Paola Vidulli - Space Planning  
Mix





Gästehaus im Apfelgarten, Hoherbercha  
Michael Deppisch  
Costanza, Costanzina





Copenhagen Island, Copenhagen  
Kim Utzon Architects  
Costanzina





Discovery 5 TV Network, Paris  
Sébastien Dauge  
Happy Happy





Discovery 5 TV Network, Paris  
Sébastien Dauge  
*Supergü*





Hallenbad Zwentl fitness centre, Zwentl  
Peter Staska, Büro CPM  
Lightdisc





Design on Board 2008, Bologna  
Tabocci Design  
Costanza, Costanzina





Design on Board 2008, Bologna  
Talocci Design  
Titania





Ferretti | Altura 690, Forlì

Costanzino

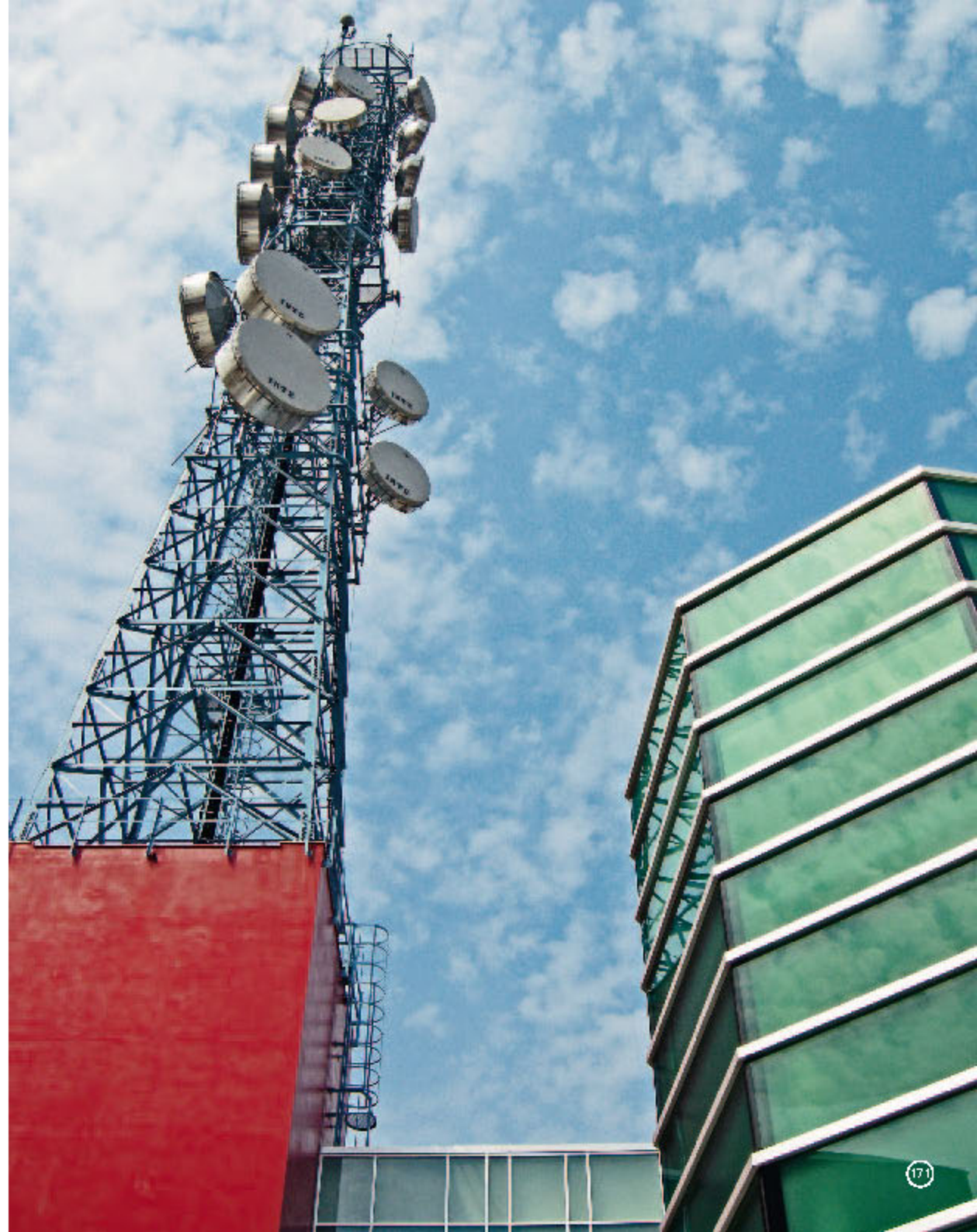




Ferretti 510, Forli  
Costanzina



Mediapason TV Network, *Milano*  
Euro milano / Alberto Catalano





Mediapason TV Network, Milano  
Euromilano / Alberto Catalano  
Glassglass



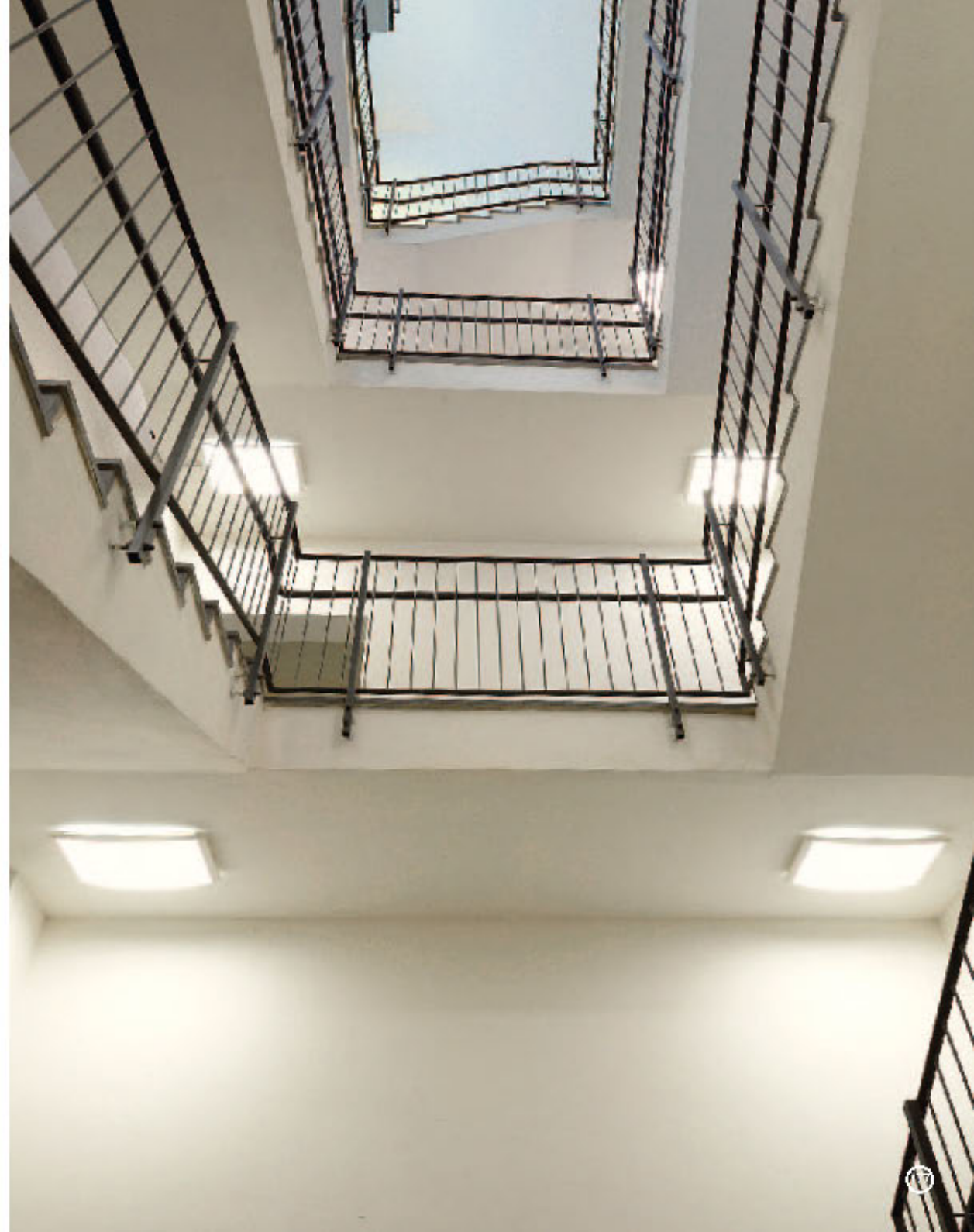




Mediapason TV Network, Milano  
Euro milano / Alberto Catalano  
Airon, s02 Elementi di Luceplan



Mediapson TV Network, Milano  
Euromilano / Alberto Catalano  
*Strip*







Mediapason TV Network, Milano  
Euromilano / Alberto Catalano  
Metropoli, s02 Elementi di Luceplan



Mediapason TV Network, Milano  
Euromilano / Alberto Catalano  
Sky







Mediapason TV Network, Milano  
Euromilano / Alberto Catalano  
Sky





Democratic Department Shop, Milano  
Paolo Giacopelli  
Chichibio



Giellesse, Salone 2008, Milano  
Massimo Colombo  
d7





CISA Andrea Palladio, Vicenza  
Alessandro Scandurra  
*Lightdisc, Fortebraccio*







Samas, Houten  
Inbo Architecten  
Glassglass





Samas, Houten  
Inbo Architecten  
Costan 20





Princess Cruises, Monfalcone  
Gerolamo Scorza  
Metropoli





Griffins Cafe, Manchester  
ILS Client - RG Design  
Glassglass







Griffins Cafe, Manchester  
ILS Client - RG Design  
Glassglass





**Champion**  
AUTHENTIC ATHLETIC APPAREL

**Champion**  
1911 1913 1914 1916 1928 Today

Showroom Basketball Champion, Bologna  
Jacopo Acciari, Voltaine  
(custom-made) Elementi di Lucisplan





Showroom Basketball Champion, Bologna  
Jacopo Acciari, Voltaire  
*(custom-mod@ Elementi di Luceplan)*





Showroom Basketball Champion, Bologna  
Jacopo Acciari, Voltaire  
(custom-made) Elementi di Luceplan





I Guess PCM, Amsterdam  
Heyligers Design + Projects





I Guess PCM „Amsterdam  
Hayligers Design + Projects  
Agave





I Guess PCM, Amsterdam  
Heyligers Design + Projects  
Queen Titania









Café Zezé, Copenhagen  
Maria Berntsen  
Miranda





Vaccine, Fuori Salone 2008, Milano  
Gabriele Centazzo  
*Queen Titania*





Valucine, Fuori Salone 2008, Milano  
Gabriele Centazzo  
Queen Titania





Musée du Quai Branly, Paris  
Jean Nouvel, Gilles Clément  
Costanzo





Musée du Quai Branly, Paris  
Jean Nouvel, Gilles Clément  
Costanza



Worsild & Søn, Copenhagen  
Mirandolina, Costanza







Worsild & Søn, Copenhagen

Miranda





Wonsild & Søn, Copenhagen

Costan 20





Worsild & Søn, Copenhagen

Queen Titania





Bauhaus Universität, Weimar  
Meck Architekten  
Bsp





*Elettis Headquarters, Jesi  
Studio Schiavoni  
a03, a01 square, a01 Elementi di Luceplan*



Audi Porsche Showroom, Marbella  
Hans-Jürgen Mehl  
*Zeno Elementi di Luceplan*







Médiathèque, Vénissieux  
Dominique Perrault  
Costanzina





Hand-drawn sign with colorful letters and symbols, including 'k', 'b', 'p', 'h', 'y', 't', 'n', 'm', 'd', 'o', 's', and a plus sign.

Kinderdagverblijf, The Hague  
A70  
Goggle, Aircon, Pod lens





Helene Elsass Center, Charlottenlund  
Costanzo





Helene Elsass Center, Charlottenlund

Costanzo



Health City fitness centre, *The Hague*

*Agave*







Health City fitnesscentre, The Hague  
Agave





Health City fitness centre, The Hague  
Agave, Titania





Riva 68' Ego Super, La Spezia  
Costanzina





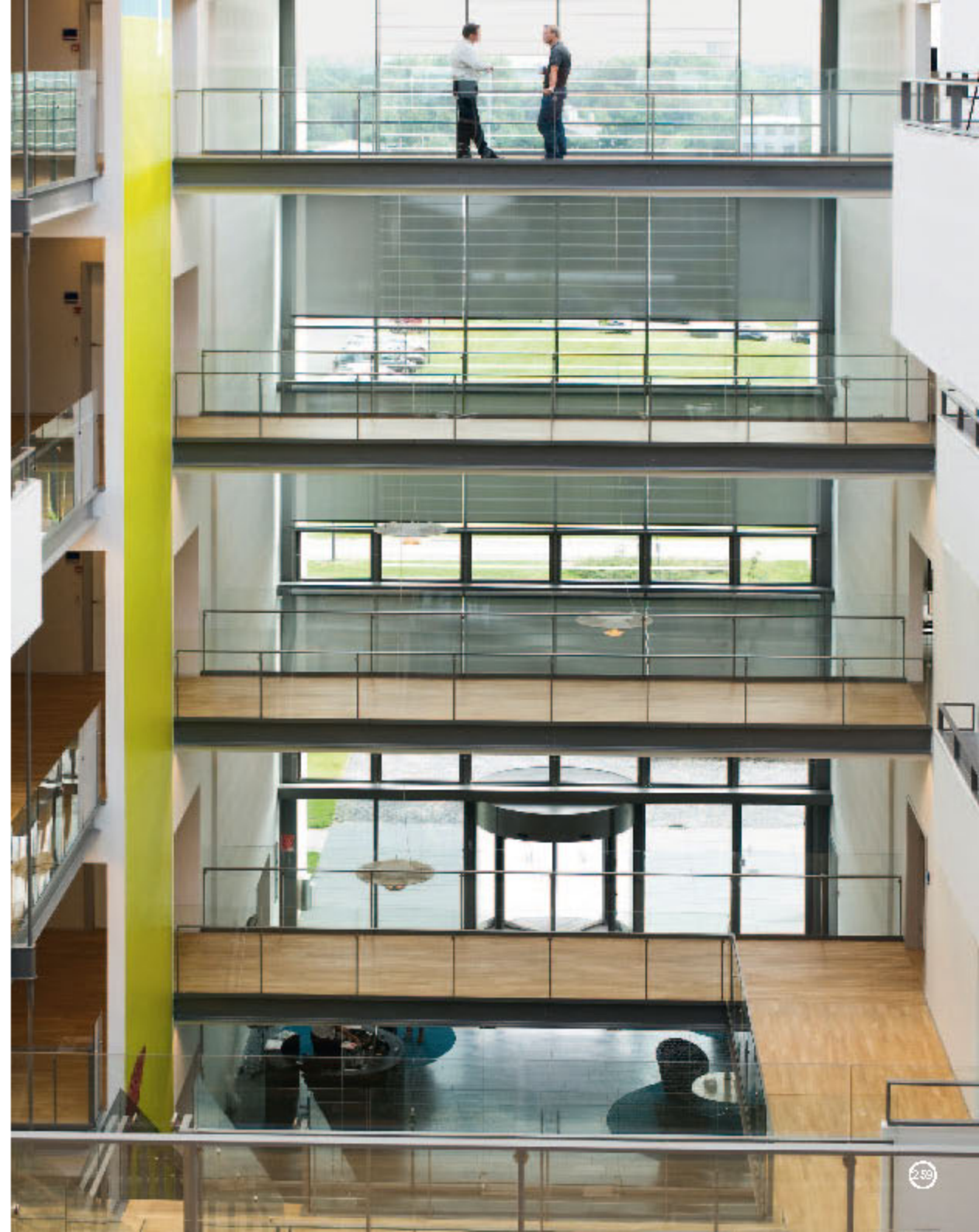
Shopping Centre, Monza  
Immobiliare Europea / Corrado Rossetti  
Skysolar version (custom-mod@)





Shopping Centre, Monza  
Immobiliare Europea / Corrado Rossetti  
Skysolarversion (custom-made)





NNE Pharmaplan, Søborg  
PLH Arch. Bine Solberg  
*Zeno Elementi di Luceplan*





NNE Pharma plan, Søborg  
PLH Arch. Bine Solberg  
Zero Elementi di Luceplan





NNE Pharmaplan, Søborg  
PLH Arch. Bine Solberg  
Costanzina (custom-made)





NNEPharmaplan, Søborg  
PLH Arch. Bine Solberg  
Aron





NNE Pharmaplan, Søborg  
PLH Arch. Bine Solberg  
Berenice





*Sabine dell'Automobile 2007, Ginevra*

*Pod lens*





Anne Frank Museum, Amsterdam



Anne Frank Museum, Amsterdam  
Metropoli







Anne Frank Museum, Amsterdam

Metropoli



MySushi, Milano  
Pod lens







Zucchi, Centro Commerciale Sarcis, Milano

Costanza





Peugeot Showroom, Madrid

Costan 20



Marex spa, Correggio  
Paolo Rizzato  
Lightdisc, Queen Titania (custom-made)







Marex spa, Correggio  
Paolo Rizzato  
Zeno Elementi di Luceplan



Feiner Möbel, Stuttgart

601 square, a01 Elementi di Luceplan







Fleiner Möbel, Stuttgart  
e01 square, a01 Elementi di Luceplan



Biemans Interieur, Breda  
*e01 square Elementi di Luceplan*







Biermans Interieur, Breda  
e01 square Elementi di Luceplan



Biermans Interieur, Brno

604 suspension Elementi di Luceplan,  
601 square Elementi di Luceplan, Gogole







Biemans Interieur, Breda  
*e01 square Elementi di Luceplan*





Biermans Interieur, Breda  
e01 square Elementi di Luceplan





Nuova Accademia Belle Arti, Milano  
ma modelatorrestudio  
Happy Happy





Nuova Accademia Belle Arti, Milano  
marco dell'atome studio  
Happy Happy, Loto



LUCEPLAN SPA  
Via E.T. Modigliani, 40  
20161 Milano  
T +39 02 882421  
F +39 02 88203400  
N. verde 800 800 169  
info@luceplan.com

LUCEPLAN USA  
26 Broadway  
NY 10004 New York  
T +1 212 98.98.265  
F +1 212 46.24.349  
info@luceplanusa.com

LUCEPLAN SCANDINAVIA  
Klubensvej 22  
Pakhus 48 - Frihavnen  
DK 2100 Copenhagen  
T +45 36.13.21.00  
F +45 36.13.21.01  
info@luceplan.net

LUCEPLAN FRANCE  
7, Impasse Charles Petit  
F-75011 Paris  
T +33 1 44.83.92.87  
F +33 1 44.83.92.88  
luceplan\_fr@luceplan.com

LUCEPLAN GERMANY  
Prenzlauer Allee 39  
D-10405 Berlin  
T +49 30 44.33.84.0  
F +49 30 44.33.84.22  
luceplan\_de@luceplan.com

#### LUCEPLAN STORES

MILANO  
Corso Monforte 7  
20122 Milano  
T +39 02 76015760  
F +39 02 764062  
luceplanstore@luceplan.com

NEW YORK  
47-49 Greene Street  
NY 10013 New York  
T +1 212 966 1399  
F +1 212 966 1799  
info@luceplanusa.com

PARIS  
225 Rue Fbg Saint Honoré  
75008 Paris  
T +33 (0) 146222152  
F +33 (0) 146689673  
luceplan\_fr@luceplan.com

[www.luceplan.com](http://www.luceplan.com)  
[www.elementi.luceplan.com](http://www.elementi.luceplan.com)

**LUCE  
PLAN**

**LUCE  
PLAN** elementr



[www.luceplan.com](http://www.luceplan.com)  
[www.elementi.luceplan.com](http://www.elementi.luceplan.com)

